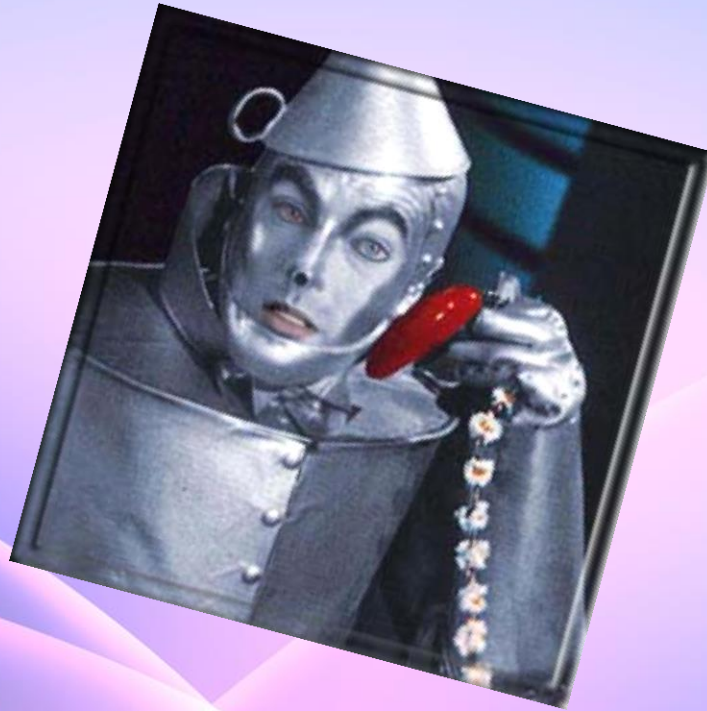


Loving Families for Growth and Change



Presented by Hope Works Counseling

Have you ever felt like loving
your family member just wasn't
enough to help them.



Hearts will never be practical until they are
made unbreakable." – *Wizard of Oz*



Love can help a loved one fight through a disease with support but it can't help cure it



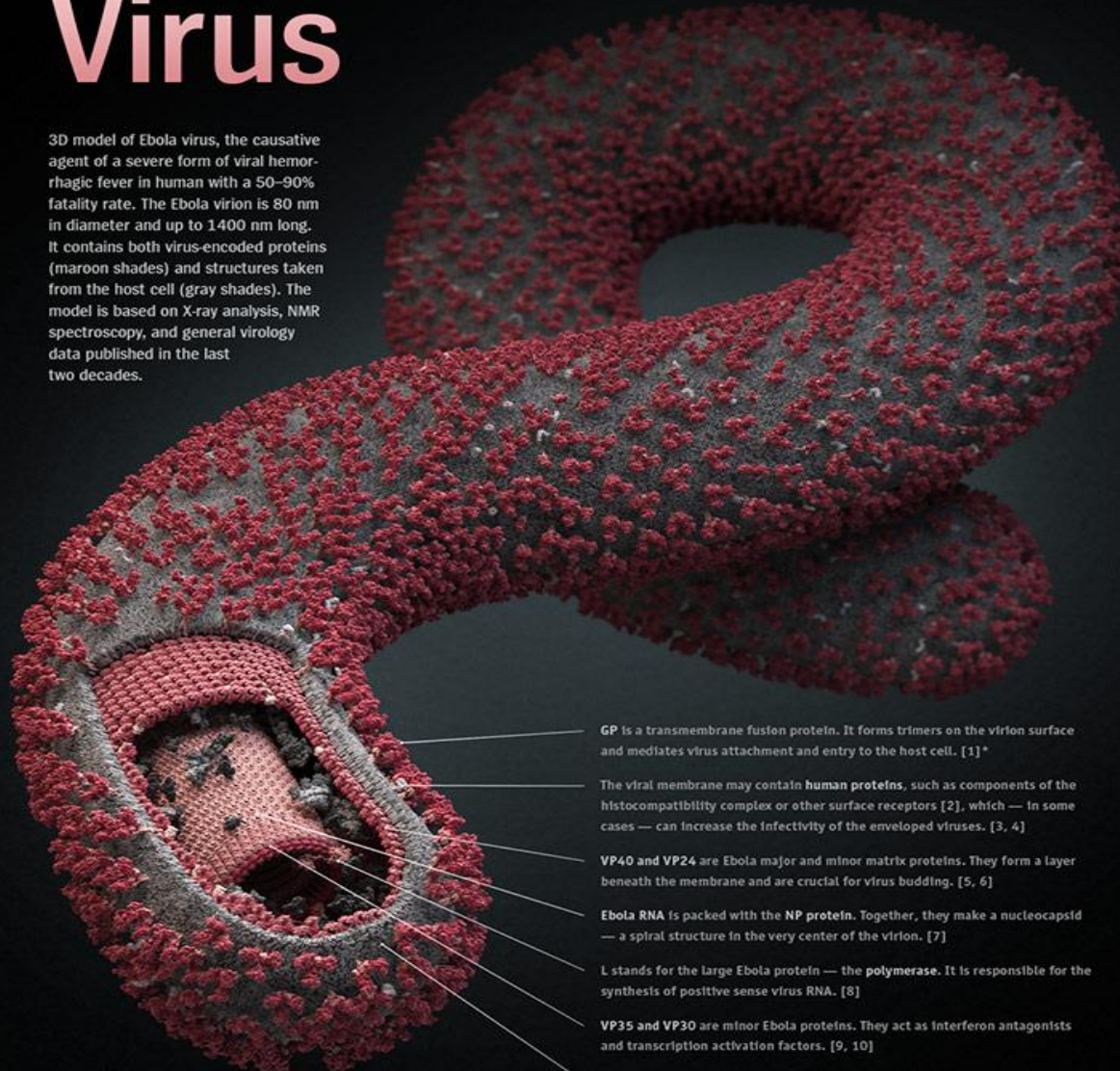
In fact this horrible disease will use your love to help to keep your family member/friend sick.



The Ebola Virus

VIRAL PARK
Project of Visual Science

3D model of Ebola virus, the causative agent of a severe form of viral hemorrhagic fever in human with a 50–90% fatality rate. The Ebola virion is 80 nm in diameter and up to 1400 nm long. It contains both virus-encoded proteins (maroon shades) and structures taken from the host cell (gray shades). The model is based on X-ray analysis, NMR spectroscopy, and general virology data published in the last two decades.



GP is a transmembrane fusion protein. It forms trimers on the virion surface and mediates virus attachment and entry to the host cell. [1] *

The viral membrane may contain **human proteins**, such as components of the histocompatibility complex or other surface receptors [2], which — in some cases — can increase the infectivity of the enveloped viruses. [3, 4]

VP40 and **VP24** are Ebola major and minor matrix proteins. They form a layer beneath the membrane and are crucial for virus budding. [5, 6]

Ebola RNA is packed with the **NP** protein. Together, they make a nucleocapsid — a spiral structure in the very center of the virion. [7]

L stands for the large Ebola protein — the **polymerase**. It is responsible for the synthesis of positive sense virus RNA. [8]

VP35 and **VP30** are minor Ebola proteins. They act as interferon antagonists and transcription activation factors. [9, 10]

The budding viral particle is wrapped in the **lipid membrane** taken from the human cell. [11]

10 nm

This model contains accurate models of 11 types of Ebola and human proteins, 13900 nucleotides of genomic RNA and more than 2.5 million lipid molecules.

*For more information and references visit www.visualsciencecompany.com/ebola





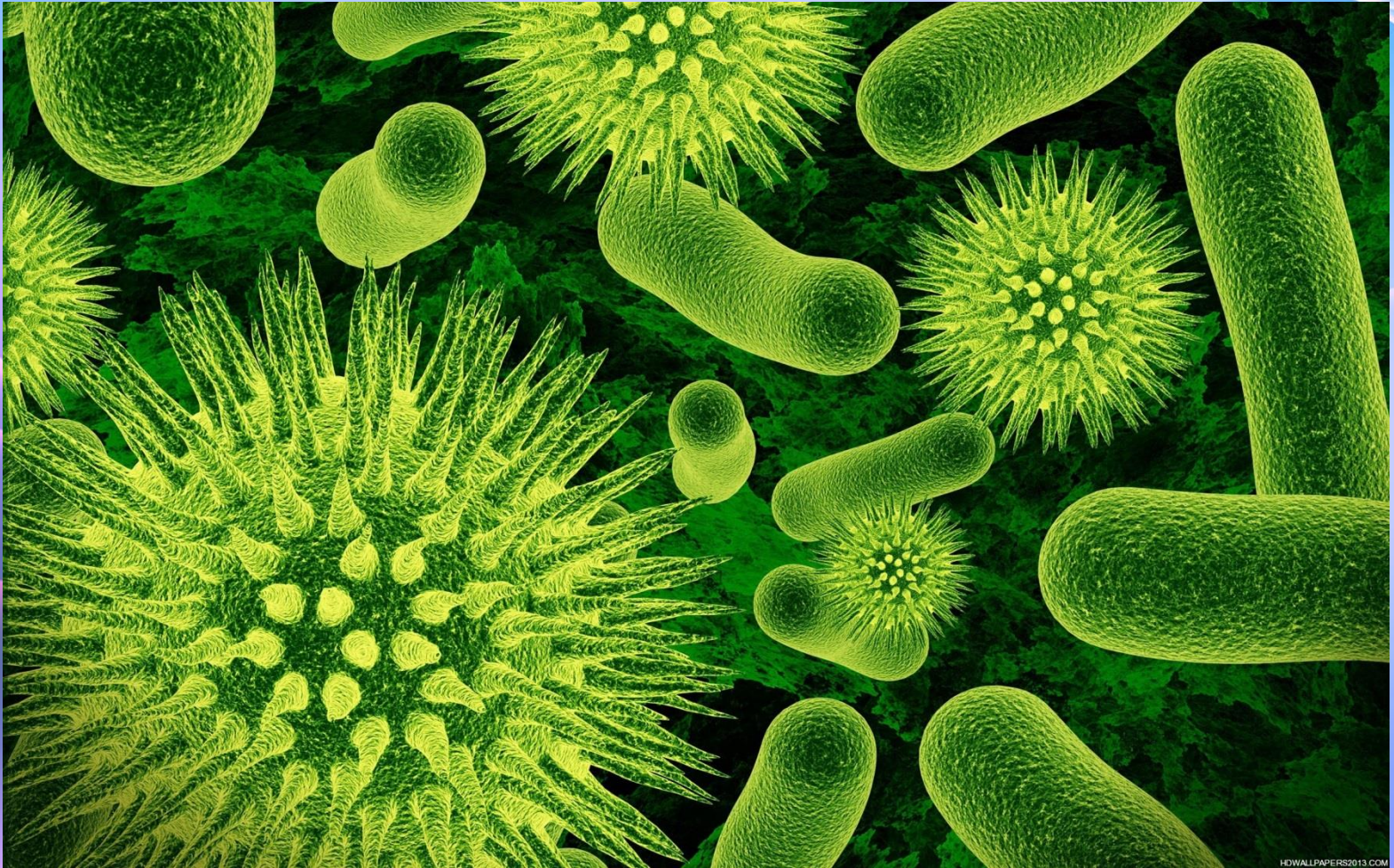
**Only 4 cases in the USA 11
total from people
transported in**



Only 1 Fatality



Lets Make a DISEASE/Virus.



HDWALLPAPERS2013.COM





Andrew Dobell

From Darkness by Andrew Dobell, United Kingdom, www.andrewdobell.co.uk client © Spiral Direct software Photoshop
Wallpaper (C) CGWallpapers.com, Artist (C) Artist own work. No part of this wallpaper may be reproduced or transmitted in any form or by any means without prior written consent of CGWallpapers.com.

© CGWallpapers.com hostJTLnet.com

196 People a day



Yes it is a disease





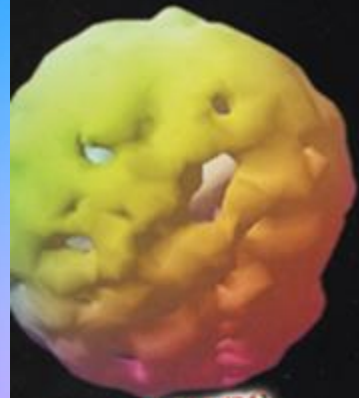


May 2000

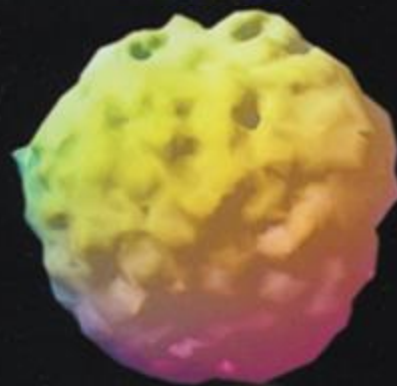


November 2000

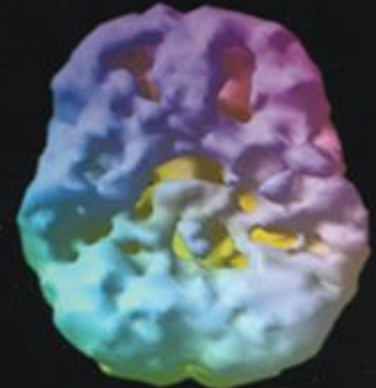




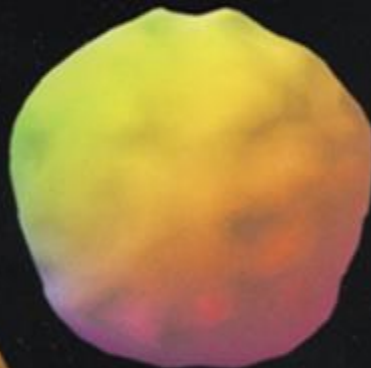
**3 YEARS
OF METH
AGE 22**



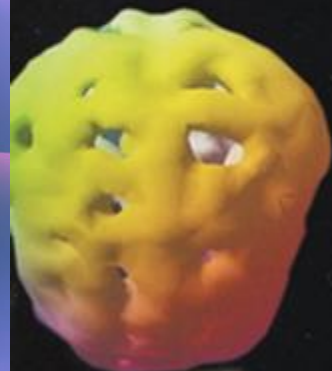
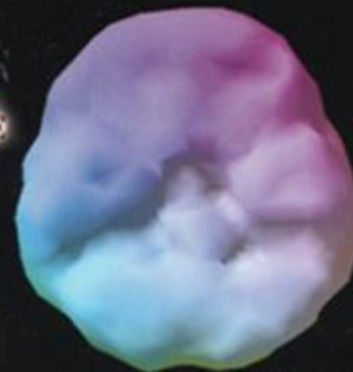
**4 YEARS
OF ALCOHOL
AGE 21**



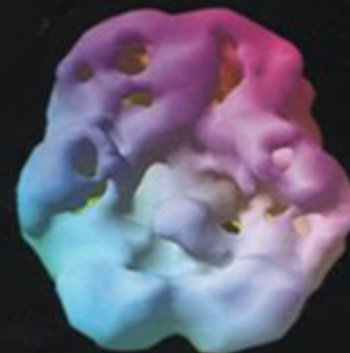
**2 YEARS
OF MARIJUANA
AGE 16**



**HEALTHY,
DRUG FREE
BRAINS
AGE 16**



**3 YEARS
OF COCAINE
AGE 22**



**6 YEARS
OF INHALANTS**

looking at cerebral blood flow and metabolism



Is there a magic bullet for addiction...Where is the cure.



Sadly there is no cure

Can only manage symptoms and lifestyle.



TREATMENT



The addict is powerless against the substance as long as the addict is actively using and stimulating the pleasure center of the brain.



Main Control Panel/Pleasure Center



An addict in active addiction does not see that there is a choice. It takes an intervention for the addict to realize that there is a choice.

Abstinence is the only way to start to make rational choices.
This requires the drug has to be out of system.





When actively using the addict is not in control, the drugs are in control. The only thing your love is doing is allowing yourself to be victimized by the disease and allowing the disease to have a stronger hold on your loved one.



What is the difference between an abuser and an addict?



Abusers

A pattern of the following for 1 year or more:

Work/School performance are negatively affected.

Takes part in reckless behaviors.

Continued use even though it negatively impacts life, work or relationships.

Legal problems, financial problems, problems w/law enforcement as a result of substance use.



Addiction

Addiction is more severe than abuse.

Use leads to tolerance (one needs to use more substances to get the desired affect)

Being unable to stop once use starts. (One is too much and 1000 isn't enough)

Exceeding self-imposed limits (I'll only have one hit)

Spends excessive time getting or using drugs

Taking a drug despite deteriorating health

Binging

Withdrawal

Craving/Compulsion



Fine line or edge between addict and abuser.
Once that line is crossed there is no going back.



The Three “ENDS” of untreated addiction



Hope Works Counseling

Program Development for your Community and Culture

906-231-1350

academypan@gmail.com







